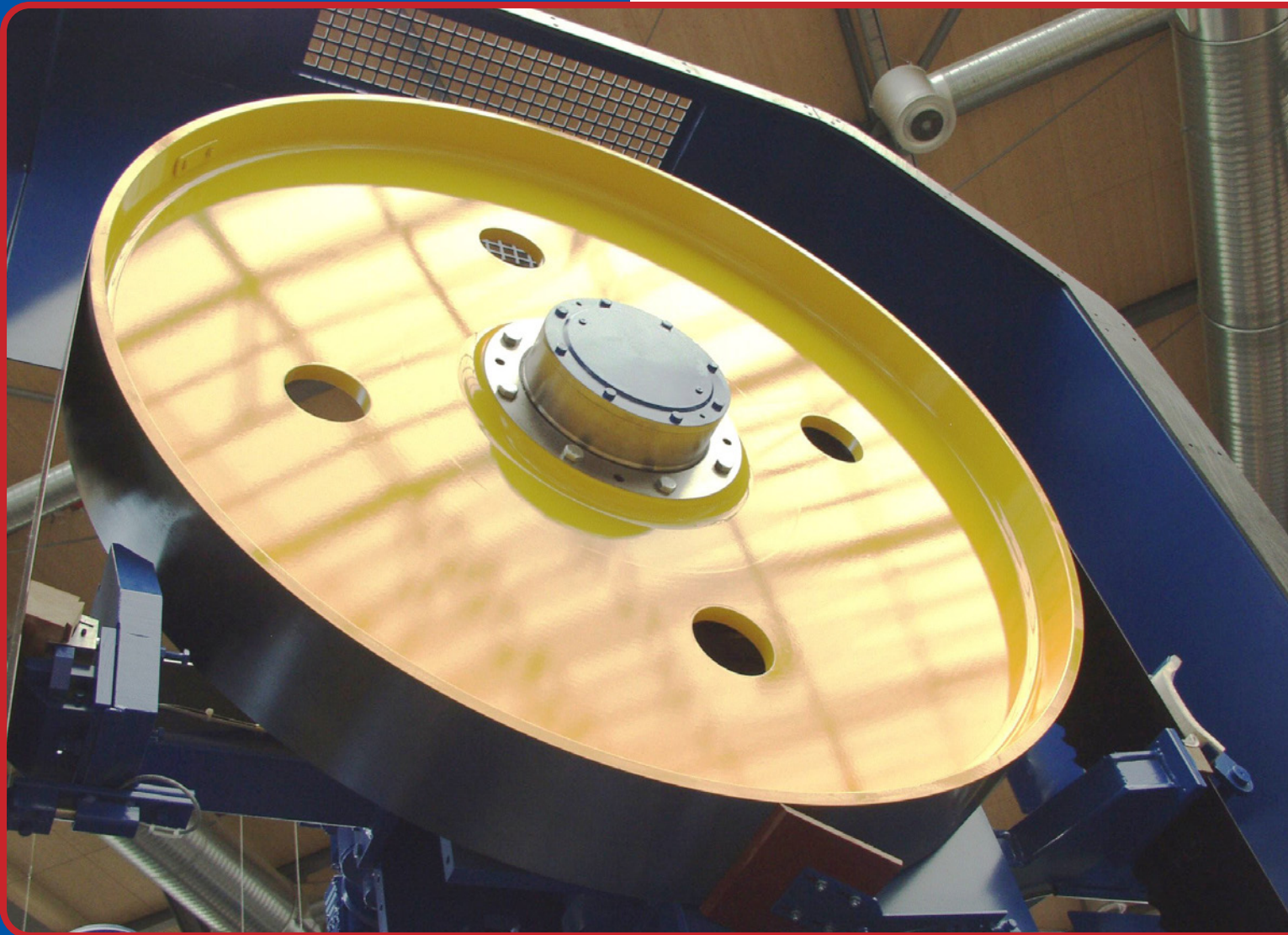




ANTRIEBSELEMENTE

Band saw rollers



If performance is required

www.luetgert-antriebe.de

BAND SAW ROLLERS

Production of band saw rollers for gantry saws in series or as exclusive custom-made products according to individual specifications or drawings. All geometries can be produced without any problems thanks to our flexible, model-free moulding process.

The highest quality is required for the production of the band saw rollers. Both the casting and the mechanical processing are carried out according to strict specifications.

The subsequent balancing of the rollers is carried out by us with the utmost care and the customised painting is checked via a coating thickness measurement.

Materials

- Standard material for peripheral speeds up to 42 m/s:
Cast iron EN-GJL-200 to EN-GJL-300 (GG-20 to GG-30) according to DIN EN 1561
- Alternative materials possible for higher circumferential speeds:
Spheroidal graphite iron (EN-GJS-400 to EN-GJS-800), cast steel (GS) or steel / welded constructions
- Weight-optimised special designs made of aluminium

Shaft-hub connection

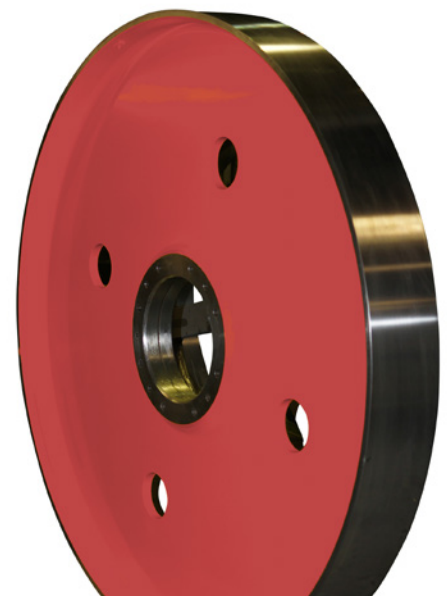
- Cylindrical bore with or without keyway
- Pre machined to accommodate couplings, flanges, clamping sets or TaperLock clamping bush connections

Designs

- Arm-, plate- or solid pulley
- Special designs up to \varnothing 2,500 mm and 5,000 kg unit weight possible

Mechanical processing

- Balanced as standard according to DIN 21940 in quality grade G16, G6.3 or G2.5
- All surfaces are primed to prevent corrosion
- Processed functional surfaces are preserved with spray wax / oil
- Individual surface treatment and special painting possible

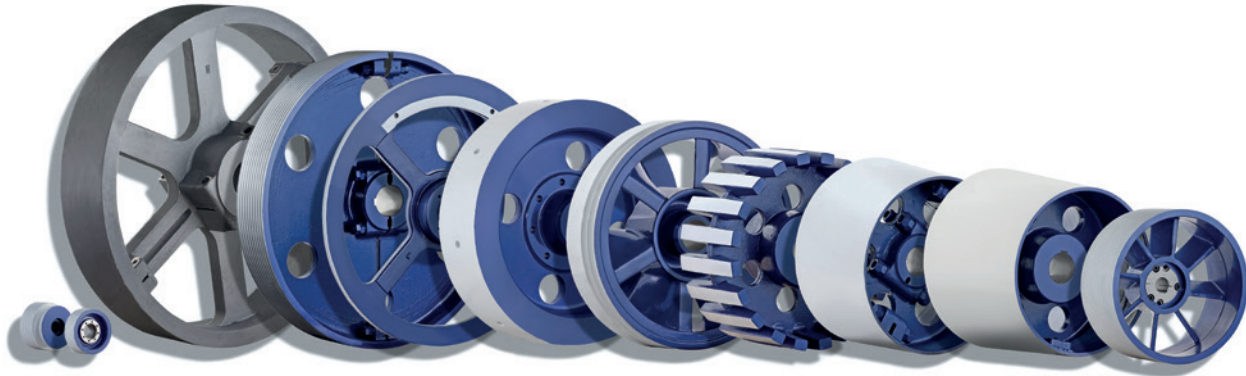


PRODUCT OVERVIEW

EXTRACT

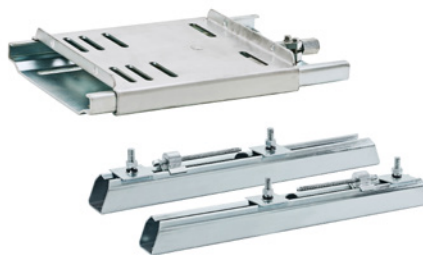
Drive pulleys

V-belt pulleys | V-belt pulleys | Flywheels | Grid pulleys | Timing belt pulleys | Rubberized Pulleys | Split pulleys | Aluminium pulley



Supplies for drive belts

TaperLock clamping bushes | Motor clamping systems | V-belts / Drive belts | V-belt metrology | Rubber suspension units
Oscillating mountings | Tensioner devices | Foundation blocks | Shafts and rolls



More information required?

www.luetgert-antriebe.de

